

**Bureau of Reclamation, Mid-Pacific Region**  
**Business Practice Guidelines for**  
**Accounting for Central Valley Project (CVP)**  
**Water Transfers**

**1.0 Purpose**

The purpose of these guidelines is to identify the process for accounting for CVP water transfers.

**2.0 Scope**

These guidelines apply to CVP contractors under water service, repayment, water right settlement, and exchange contracts. These guidelines are effective May 15, 2008, with applicable updates. The guidelines were implemented and used in draft form during the period March 1, 2007 through May 14, 2008.

**3.0 Authorities and References**

- a. Central Valley Project Improvement Act (CVPIA), Title XXXIV of Public Law 102-575
- b. Irrigation Water Ratesetting Policy, 1988
- c. Municipal & Industrial (M&I) (Interim) Water Ratesetting Policy, 1993
- d. Policy on Water Rates for Water Transfers from One CVP Contractor to Another CVP Contractor, April 28, 2005
- e. Revenue Application Policy for Water Transfers (in progress by MP 3400)
- f. Reclamation Reform Act (RRA) (Full Cost Water Rates)
- g. Reclamation Wide Transfer Policy (Reclamation Manual/Policy WTR P02)
- h. San Joaquin River Restoration Settlement Act, Title X of Public Law 111-11

**4.0 Expiration**

These guidelines supplement but do not replace related U.S. Department of the Interior and Reclamation-wide policies, directives, and standards. The guidelines supersede all previous regional administrative guidance on this subject and will remain in effect until formally revised or rescinded.

**5.0 Contacts**

Financial Manager, 916-978-5550  
Ratesetting Services Manager, 916-978-5367  
Resources Manager, 916-978-5201  
All located at 2800 Cottage Way, Sacramento CA 95825

## 6.0 Definitions

- a. **Ability-to-Pay Relief:** Provision of Reclamation Project Act of August 4, 1939, as amended and supplemented by other statutes, the Reclamation Project Act of August 4, 1939, relating to the repayment of the project construction costs allocated to irrigation; and, section 3407 (d)(2)(A) of the CVPIA, relating to the payment of restoration charges for irrigation water that prescribes irrigation contractors may obtain relief from their capital repayment obligations and restoration charges based upon an economic analysis of their ability to meet those obligations and charges.
- b. **Assessments and Charges:** For Trinity Public Utilities District Assessment and/or Charges applicable pursuant to CVPIA, see Section 9.4 of this Guide for description.
- c. **Banked Water:** Central Valley Project water approved to be banked for use at a later date.
- d. **Conveyance Pumping Component:** This component includes the construction costs of the main Project pumping facilities used to move irrigation and M&I water through the Project, including Corning, Dos Amigos, Jones Pumping Plants and O'Neill Pumping-Generating Plant.
- e. **Cost of Service Water Rates:** The term "cost of service water rates" means the annual rate for irrigation and M&I water established pursuant to current water ratesetting policies.
- f. **Direct Pumping Component:** The direct pumping O&M and capital cost components applicable when Direct Pumping Facilities are used for delivery of water
- g. **Exchange Contractors:** Contractors being provided substitute CVP water pursuant to the terms of their exchange agreement.
- h. **Full Cost Water Rate:** The water rate defined in Section 202(3) or 205(a)(3) of the RRA, as applicable.
- i. **Friant Division Repayment Contract:** Repayment contracts executed by Friant Division contractors pursuant to the provisions of the San Joaquin River Restoration Settlement Act.
- j. **M&I Full Cost Water Rate:** This rate shall mean the Full Cost Rate applicable to the delivery of M&I Water.

- k. **Renewed Contracts:** Water service or Sacramento River Settlement contracts which have been renewed after passage of the CVPIA. For purposes of setting transfer rates, the “renewed contracts” include long-term, interim renewal, and exchange contracts<sup>1</sup>.
- l. **Tiered Pricing Component:** The amount to be paid for each acre-foot of water delivered as described in transferor’s contract and in accordance with section 3405(d) of the CVPIA.

## **7.0 Roles and Responsibilities**

### **a. Resources Management Division. The Resources Management Division is responsible for:**

1. Providing overall CVP policy on water transfers and rates for water transfers.
2. Promptly informing area and field offices, the Ratesetting Manager, and Accounting Office of long-term transfer agreements.

### **b. Area and Field Offices. These offices are responsible for:**

1. Calculating the appropriate water transfer rates and charges using these guidelines.
2. Developing and retaining appropriate documentation supporting each transfer.
3. Recording water transfers in the Bureau of Reclamation’s Water Operations and Recordkeeping System (BOR-WORKS) in the month after the transfer occurred.
4. Using the regional CVP transfer form, Exhibit D, to identify rates and charges associated with the transfer. Copies must be provided to Regional Resources Manager, Accounting Services Manager, and Ratesetting Manager within 5 business days of transfer approval.
5. Ensuring that Regional Resources Manager and Financial Management Division are informed of short-term transfer agreements by providing a copy of each approval letter to MP-400.
6. Performing quality assurance reviews of Area Office transfer approvals.

### **c. Ratesetting Services is responsible for:**

1. Developing allocable rates per acre-foot and ability-to-pay relief rates.
2. Accounting for and applying water transfer revenues.
3. Performing quality assurance reviews of water transfer rates
4. Ensuring guidance for accounting for water transfers is complete and up-to-date.

### **d. Accounting Services is responsible for:**

1. Accounting for payments for the water transfers.

### **e. Contractors are responsible for:**

1. Requesting approval or acknowledgment as appropriate for transferring water according to contract terms and conditions, and for complying with terms and conditions delineated in the approval letter.

---

<sup>1</sup> Under the Water Acquisition Program agreement between the United States (U.S.) and the Exchange Contractors, dated June 3, 2006, the transferee pays on behalf of the San Joaquin River and Mendota Pool Settlement Contractors (See Exhibit D, Example 6 for rate development).

## **8.0 Principles**

These guidelines are intended to provide the area offices, field offices, Resource Management Division and the Financial Management Division with the guidance necessary to consistently and accurately account for CVP water transfers under water service, repayment, settlement, and Exchange contracts.

## **9.0 Process for Determining Rates and Charges and Responsibility for Payment**

Water rates, charges, and assessments are determined through these guidelines. These instructions supplement the *Final Policy on Water Rates for Water Transfers from One CVP Contractor to Another CVP Contractor*, dated April 28, 2005.

Payments of all water rates, charges, and assessments associated with transferred water are the responsibility of the transferor.<sup>2</sup> Payment of all conveyance O&M (including project use power) rates and charges are the responsibility of the transferor or transferee consistent with the policies and procedures of the responsible operating non-federal entity.

### **9.1 Determining Water Rates and Charges for Renewal Contractors**

Generally, the water transfer rate is the transferor's cost of service rate adjusted to include the cost of additional services provided and/or reduced for direct pumping O&M services not used<sup>3</sup>.

- a. Determining additional services:** Additional services are costs incurred for use of Reclamation facilities and services that would not otherwise occur absent the transfer.

They may include, but are not limited to, additional operations and maintenance costs for:

- Storage
- Direct pumping
- Conveyance (Folsom-South Canal only), and
- Conveyance pumping (South of Delta transfers related to Dos Amigos pumping for Cross Valley Canal contractors and potentially Tracy pumping)

Certain additional capital costs for:

- Storage
- Conveyance
- Conveyance pumping, and
- Direct pumping.

Capital costs do not include San Luis Drain capital.<sup>4</sup> Reclamation reserves the right to assess appropriate fees (based on CVP reimbursable costs not included in the rate calculations) when there are special services that are not captured in standard transfer allocable costs per acre-foot components.

---

<sup>2</sup> Transferee is to pay for any additional interest after water is delivered to Full Cost lands.

<sup>3</sup> For Rescheduled water transferred, all water rates (including applicable additional services and Full Cost Water Rates) are based on the rates for the year the water is rescheduled from (See Exhibit D, Example 7 for rate development).

<sup>4</sup> This is a revision from the April 28, 2005 policy on water rates for water transfers.

b. **Identifying reduced services.** Reduced services are direct pumping operations and maintenance costs only<sup>5</sup>.

c. **Other factors.** Other factors that must be considered include:

1. whether the contractor has an ability-to-pay limitation or relief;
2. the contractor has converted to a Friant 9(d) contract (see section 9.3)
3. the applicability of tiered pricing (per the CVPIA Section 3405(d)1, 2 and 3);
4. the water being transferred is being applied to lands subject to the full cost rate;
5. the applicability of Friant surcharge;
6. the applicability of mitigation and restoration charge;
7. the applicability of an M&I Surcharge; and
8. the applicability of Trinity PUD Assessment

## **9.2 Determining Transfer Rates and Charges**

The enclosed exhibits provide decision trees to determine applicable transfer rates and charges. Each exhibit is followed by tables that provide technical instructions for computing the transfer rate. Listed below is a summary of exhibits and tables. See Section 9.3 for transfers by Friant Division CVP contractors that have executed repayment contracts.

### **Exhibit A – Transferor is a renewal contractor / Transferee is a CVP contractor**

<u>Table</u>	<u>Transferor</u>	<u>Transferee</u>
A-1	Irrigation	Irrigation
A-2	Irrigation	M&I
A-3	M&I	M&I
A-4	M&I	Irrigation

### **Exhibit B – Transferor is not a CVP renewal contractor / Transferee is a CVP contractor**

<u>Table</u>	<u>Transferor</u>	<u>Transferee</u>
B-1	Irrigation or M&I	Irrigation
B-2	Irrigation or M&I	M&I

### **Exhibit C – Transferor is a CVP contractor / Transferee is not a CVP contractor**

<u>Table</u>	<u>Transferor</u>	<u>Transferee</u>
C-1	Irrigation or M&I	Irrigation or M&I

**Exhibit D provides examples for calculating water transfer rates.**

**Exhibit E is the water transfer form.**

---

<sup>5</sup> The non-federal operating entity is responsible for conveyance pumping O&M costs.

**Section 9.3 Friant Division Contractors Converted to 9(d) Contracts**

Friant Division Contractors who have entered into repayment contracts under section 9(d) of the 1939 Act and transfer water have special requirements for Full Cost pricing. If the transfer requires calculation of Full Cost pricing for Reclamation Reform Act, Tier Pricing, or delivering water to water users that have not entered into CVP contracts, the following applies:

1. Interest applies to any capital (construction cost) that has not been paid.
  - A. For irrigation, refer to the water ratesetting Full Cost schedules for 9(d) rates of the transferor;
  - B. For M&I, consult with the Water Ratesetting Branch to determine the applicable water rates.
2. Interest rate for additional services of the transferee needs to be developed.

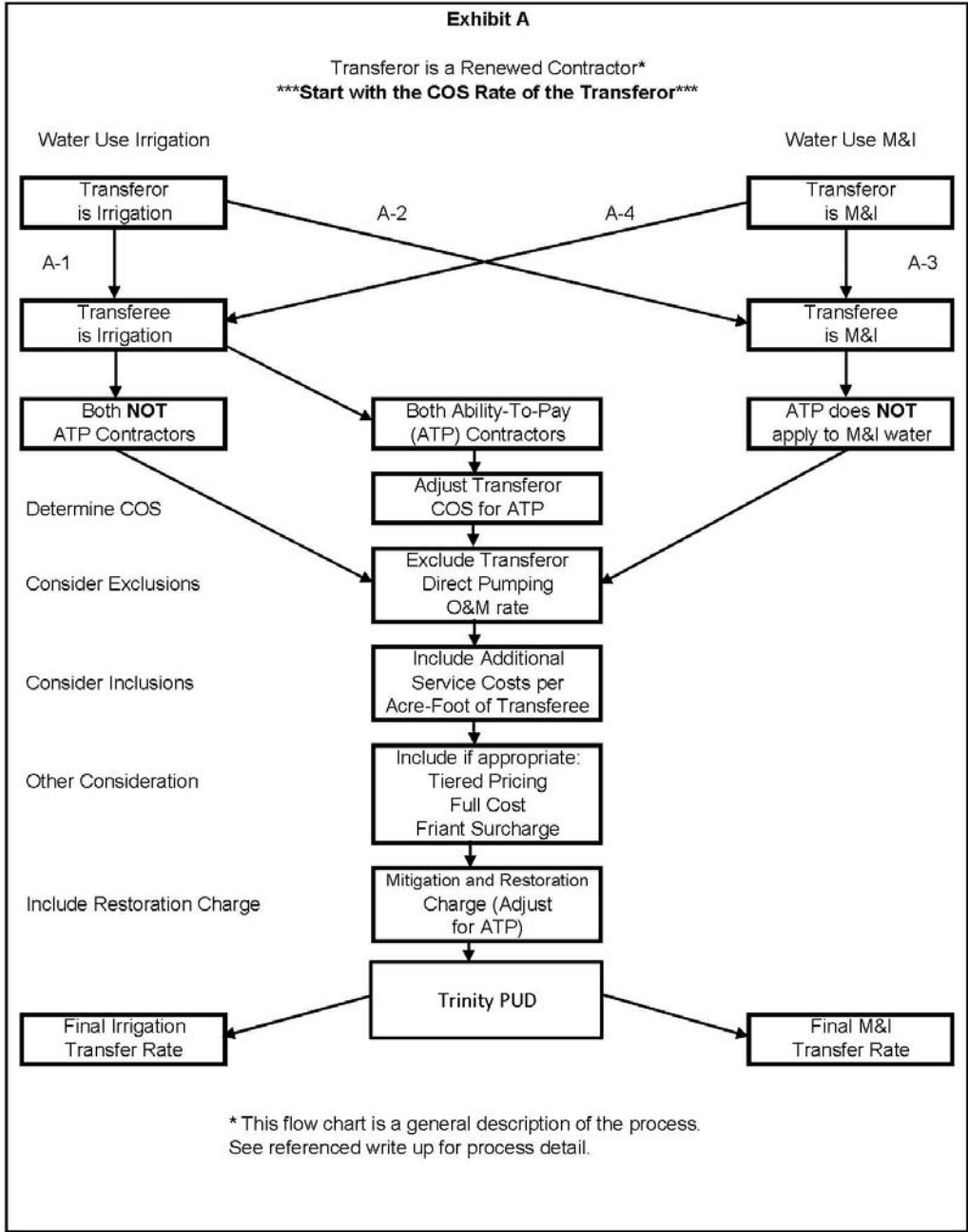
**9.4 Assessments and Charges under the CVPIA**

**Trinity Public Utility District Assessment:**

Pursuant to Public Law 106-377, the Bureau of Reclamation is assesses and collects \$162,000 annually, indexed for inflation, from CVP water contractors for remittance to Trinity PUD. Assessment is applicable to water delivered in FY 2001 and thereafter.

**Charges under the CVPIA:**

- A. Friant surcharges;**
- B. M&I surcharges** (Applicable to water sold or transferred between a CVP contractor and a non-CVP contractor when water is ultimately used for M&I purposes);
- C. Mitigation & restoration charges** (Applicable to CVP irrigation and M&I water;
- D Water transfer charges** - applicable to transfers between a CVP contractor and a non-CVP contractor. The incremental charged is the difference between full-cost and cost-of-service for irrigation water. The incremental charged is the difference between M&I rates and cost-of-service shall be the amount charged for M&I water. These charges paid are deposited into the CVP Restoration Fund.



**Transferor:** Irrigation, Renewed Contract  
**Transfer Purpose:** Irrigation, CVP Contractor

**WORKSHEET DEVELOPMENT:**

Compile the proposed transfer rate using the transferor's cost of service rate. If the transferor is a Friant Division Contractor who has entered into a Friant 9(d) contract, refer to Section 9.3 for further clarification of the rate development.

**Note: Ability to Pay relief does not apply when water is being applied to Full Cost lands.**

1. Do both the transferor and transferee have ability to pay relief?
  - A. No, go to step 2 through 8 (see Exhibit D, Example 1).
  - B. Yes. Do the following and then go to step 2 through 8 (See Exhibit D, Examples 2) and consider Recapture of O&M (see definition).
    - i. Determine capital relief of the transferor's rate as follows:
      - (a) If both the transferor and transferee have full capital and mitigation and restoration charge relief, ***the transferor's allocable capital cost per acre-foot and the mitigation and restoration charge is relieved in full;***
      - (b) If one or both have partial relief, the greater of the sum of the capital cost per acre-foot and mitigation and restoration charge paid by either contractor will be applied to the transfer water to the extent of the allocable capital cost per acre-foot of the transferor plus mitigation and restoration charge. If there is any remaining to be relieved, the amount relieved is to the mitigation and restoration charge then, if any remains, to the allocable capital cost per acre-foot of the transferor.
2. Does the transfer require use of additional CVP services?
  - A. No. Additional costs are not added.
  - B. Yes. Identify the additional services to be used and the cost per acre-foot for each service. Use Irrigation rate from Irrigation water ratebook schedule A-2Bb (Capital) and A-2A (Operation and Maintenance).
    - i. Do not include allocable costs per acre-foot components for the San Luis Drain capital cost and Kesterson clean-up costs.
    - ii. Include direct pumping capital as an additional component (This component may be reflected in the transferor's cost of service rate as it is a fixed cost to be recovered regardless of the transfer action).
3. Does the transfer require fewer CVP services?
  - A. No.
    - i. Do not deduct any components from the transferor's rate.
    - ii. Do not deduct San Luis Drain Kesterson cleanup costs.
    - iii. No adjustments are made for capital services as these are fixed costs.

Are Both  
Contractors  
ATP?

Additional  
Services?

Fewer  
Services?



- B. Yes. Deduct appropriate O&M services. Supporting documentation is needed to document actual financial savings realized by the United States as a result of the transfer.
  - i. Deduct direct pumping O&M allocable costs per acre-foot component of the transferor as identified on schedule A-2A of the Irrigation water ratebook.

4. Does tiered pricing apply to transferor's water? Tiered water rates are not applicable for Sacramento River Settlement Contractors.

- A. No. Do not add tiered charges.
- B. Yes. Add the appropriate tiered irrigation charges, dependent upon the applicable tier (Consult the long-term contract, Exhibit B, for the applicable rate. This exhibit is updated annually. If uncertain whether tiered charges apply, the tiered charge will be included in the approval letter and accounted for when water is transferred).

Tiered  
Water  
Rates?

5. Is the transferred water being delivered to full cost lands?

- A. No. Full cost interest rates do not apply.
- B. Yes. In addition to the costs determined above, the transferee is required to pay interest on all capital. These costs apply and are to be paid by the transferee the month after delivery.

Water on  
Full Cost  
Lands?

6. Apply current Irrigation mitigation and restoration charge to the extent of partial or full ATP for the transferee. Refer to Section 1.B.i. (a) and (b) for determination of the mitigation and restoration charge.

Restoration

7. Is the water being diverted from the Friant-Kern Canal, Madera Canal or Millerton Reservoir?

- A. No. Friant surcharge does not apply.
- B. Yes. Friant surcharge applies.

Friant  
Surcharge?

8. Apply the Trinity Public Utility District Assessment on delivered water as identified in the letter to CVP water users dated March 12, 2007.

Trinity  
PUD

**Transferor:** Irrigation, Renewed Contract  
**Transfer Purpose:** M&I, CVP Contractor

**WORKSHEET DEVELOPMENT:**

Compile the proposed transfer rate using the transferor's cost of service rate. If the transferor is a Friant Division Contractor who has entered into a Friant 9(d) contract, refer to Section 9.3 for further clarification of the rate development.

**1. Does the transferor have an M&I cost of service water rate?**

- A. Yes. Start with the transferor's M&I cost of service water rate from M&I Schedule A-1 and do steps 2 through 7 below.
- B. No. Determine a temporary M&I water rate using the Special Water Ratebook that includes the same components as the transferor's Irrigation water and do steps 2 through 7 below (See Exhibit D, Example 3).

M&I Cost  
of Service

**2. Does the transfer require use of additional CVP services?**

- A. No. Additional costs are not added.
- B. Yes. Identify the additional services to be used and the costs per acre-foot for each service. Refer to the Special Water Ratebook, Schedule TR-1 (Capital) and M&I Water Ratebook, Schedule A-2A (Operation and Maintenance).
  - i. Do not include allocable costs per acre-foot components for the San Luis Drain capital cost or Kesterson clean-up costs.
  - ii. Include direct pumping capital as an additional component (this component may be reflected in the transferor's cost of service rate as it is a fixed cost to be recovered regardless of the transfer action).

Additional  
Services?

**3. Does the transfer require fewer CVP services?**

- A. No.
  - i. Do not deduction any components from the transferor's rate.
  - ii. Do not deduct San Luis Drain Kesterson cleanup costs.
  - iii. No adjustments are made for capital services as these are fixed costs.
- B. Yes. Deduct appropriate O&M services. Supporting documentation is needed to document actual financial savings realized by the United States as a result of the transfer.
  - i. Deduct direct pumping O&M component per acre-foot of the transferor's rate as identified on Schedule A-2A of the M&I water ratebook.

Fewer  
Services?

4. Does tiered pricing apply to transferor's water? Tiered Water Rates are not applicable for Sacramento River Settlement Contractors.
  - A. No. Do not add tiered charges.
  - B. Yes. Add the appropriate M&I tiered charges, dependent upon the applicable tier (Consult the long-term contract, Exhibit B, for the applicable rate. This exhibit is updated annually. If uncertain whether tiered charges apply, the tiered charge will be included in approval letter and accounted for when water is transferred).
5. Apply current M&I mitigation and restoration charge.
6. Is the water being diverted from the Friant-Kern Canal, Madera Canal, or Millerton Reservoir?
  - A. No. Friant surcharge does not apply.
  - B. Yes. The Friant surcharge applies.
7. Apply the Trinity Public Utility District Assessment on delivered water as identified in the letter to CVP water users dated March 12, 2007.

Tiered  
Water  
Rates?

Restoration

Friant  
Surcharge?

Trinity  
PUD

DRAFT (Aug 2017)

**Transferor:** M&I, Renewed Contract  
**Transfer Purpose:** M&I, CVP Contractor

**WORKSHEET DEVELOPMENT:**

Compile the proposed transfer rate using the transferor's cost of service rate. If the transferor is a Friant Division Contractor who has entered into a Friant 9(d) contract, refer to Section 9.3 for further clarification of the rate development.

M&I Cost  
of Service

**1. Begin with the transferor's M&I cost of service water rate.**

A. Compile the proposed transfer rate using the transferor's M&I cost of service rate.

Additional  
Services?

**2. Does the transfer require use of additional CVP services?**

A. No. Additional costs are not added.

B. Yes. Identify the additional services to be used and the cost per acre-foot for each service. Use the Special Water Ratebook, Schedule TR-1 (Capital) and M&I water ratebook Schedule A-2A (Operation and Maintenance).

i. Do not include allocable costs per acre-foot components for the San Luis Drain capital cost and Kesterson clean-up costs.

ii. Include direct pumping capital as an additional component (this component may be reflected in the transferor's cost of service rate as it is a fixed cost to be recovered regardless of the transfer action.).

Fewer  
Services?

**3. Does the transfer require fewer CVP services?**

A. No. Do not deduct any components from the transferor's rate and no adjustments are made for capital services as these are fixed costs.

B. Yes. Deduct appropriate O&M services. Supporting documentation is needed to document actual financial savings realized by the United States as a result of the transfer.

i. Deduct direct pumping O&M allocable costs per acre-foot component of the transferor as identified on Schedule A-2A of the M&I water ratebook.

Tiered  
Water  
Rates?

**4. Does tiered pricing apply to transferor's water?**

A. No. Do not add tiered charges.

B. Yes. Add the appropriate M&I tiered charges, dependent upon the applicable tier (Consult the long-term contract, Exhibit B, for the applicable rate.). If uncertain whether tiered charges apply, the tiered charges will be included in the approval letter and accounted for when water is transferred.

Restoration

**5. Apply current M&I mitigation and restoration charge.**

Friant  
Surcharge?

**6. Is the water being diverted from the Friant-Kern Canal, Madera Canal, or Millerton Reservoir?**

A. No. Friant surcharge does not apply.

B. Yes. Friant surcharge applies.

Trinity  
PUD

**7. Apply the Trinity Public Utility District Assessment on delivered water as identified in the letter to CVP water users dated March 12, 2007.**

**Transferor: M&I, Renewed Contract**  
**Transfer Purpose: Irrigation, CVP Contractor**

**WORKSHEET DEVELOPMENT:**

Compile the proposed transfer rate using the transferor's cost of service rate. If the transferor is a Friant Division Contractor who has entered into a Friant 9(d) contract, refer to Section 9.3 for further clarification of the rate development.

M&I Cost of Service

1. **Begin with the transferor's M&I cost of service water rate (see Exhibit D, Example 4).**

A. Compile the proposed transfer rate using the transferor's M&I cost of service rate.

Additional Services?

2. Does the transfer require use of additional CVP services?

A. No. Additional costs are not added.

B. Yes. Identify the additional services to be used and the costs per acre-foot for each service. Use Irrigation rate from Irrigation water ratebook schedule A-2Bb (Capital) and A-2A (Operation and Maintenance).

i. Do not include allocable costs per acre-foot components for the San Luis Drain capital cost or Kesterson clean-up costs.

ii. Include Direct Pumping capital as an additional component (This component may be reflected in the transferor's cost of service rate as it is a fixed cost to be recovered regardless of the transfer action).

Fewer Services?

3. Does the transfer require fewer CVP services?

A. No - Do not deduct any components from the transferor's rate.

B. Yes.

i. Deduct appropriate O&M services.

ii. Deduct direct pumping O&M cost component per a/f of the transferor as identified in the M&I water ratebook. Supporting documentation is needed to document actual financial savings realized by the United States as a result of the transfer.

Tiered Water Rates?

4. Does tiered pricing apply to transferor's water?

A. No. Do not add tiered charge.

B. Yes. Add the appropriate M&I tiered charge, dependent upon the applicable tier (Consult the long-term contract, Exhibit B, for the applicable rate.). If uncertain whether tiered charges apply, the tiered charge will be included in approval letter and accounted for when water is transferred.

Water on Full Cost Lands?

5. Is the transferred water being delivered to full cost lands?

A. No. Full cost interest rates do not apply.

B. Yes. In addition to the costs determined above, the transferee is required to pay interest on all capital. These costs apply to and are to be paid by the transferee the month after delivery.

Restoration

6. Apply current Irrigation mitigation and restoration charge.

Friant  
Surcharge?

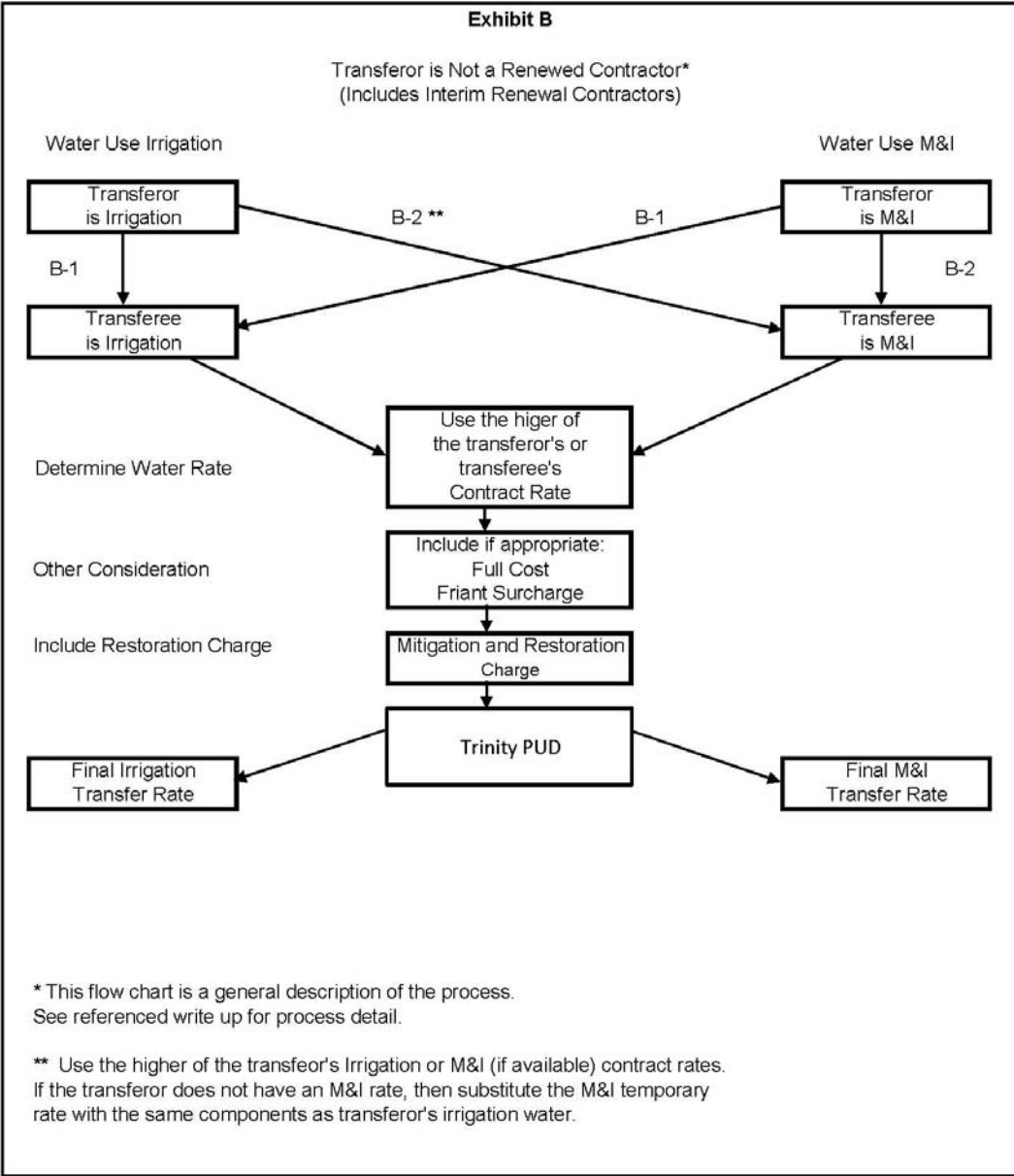
7. Is the water being diverted from the Friant-Kern Canal, Madera Canal, or Millerton Reservoir?

- A. No. Friant surcharge does not apply.
- B. Yes. Friant surcharge applies.

Trinity  
PUD

8. Apply the Trinity Public Utility District Assessment on delivered water as identified in the letter to CVP water users dated March 12, 2007.

DRAFT (Aug 2011)



**Transferor: Irrigation or M&I - Not a Long Term Contractor  
(For Exchange Contractors, Use Exhibit A)**

**Transfer Purpose: Irrigation, CVP Contractor**

Is the Transferor an irrigation or M&I Contractor? If irrigation, proceed to the following steps below. If M&I, go to the section below where the Transferor is an M&I Contractor.

**Transferor is an Irrigation contractor**

1. Use the higher of the two irrigation contract rates.
2. Is the transferred water being delivered to Full Cost Lands?
  - A. No. Full cost interest rates do not apply.
  - B. Yes. Transferee is subject to transferee's full cost rate. The transferee must pay the increment between transferee's full cost rate and the rate identified in step 1. above. If the Full Cost Water rate is less than the water rate in step 1., there is no incremental charge. These costs apply to and are to be paid by the transferee the month after delivery.
3. Apply current Irrigation mitigation and restoration charge.
4. Is the water being diverted from the Friant-Kern Canal, Madera Canal, or Millerton Reservoir?
  - A. No. Friant surcharge does not apply.
  - B. Yes. Friant surcharge applies.
5. Apply the Trinity Public Utility District Assessment on delivered water as identified in the letter to CVP water users dated March 12, 2007.

Water on Full Cost Lands?

Restoration

Friant Surcharge

Trinity PUD

**Transferor is an M&I contractor**

1. Use the higher of the transferor's M&I rate or the transferee's irrigation rate.
2. Is the transferred water being delivered to full cost lands?
  - A. No. Full cost interest rates do not apply.
  - B. Yes. Transferee is subject to transferee's full cost rate. The transferee must pay the increment between transferee's full cost rate and the rate identified in step 1 above. If the Full Cost Water rate is less than the water rate in step 1., there is no incremental charge. These costs apply to and are to be paid by the transferee the month after delivery.

Water on Full Cost Lands?



Restoration

3. Apply current Irrigation mitigation and restoration charge.

Friant  
Surcharge

4. Is the water being diverted from the Friant-Kern Canal, Madera Canal, or Millerton Reservoir?

A. No. Friant surcharge does not apply.

B. Yes. Friant surcharge applies.

Trinity  
PUD

5. Apply the Trinity Public Utility District Assessment on delivered water as identified in the letter to CVP water users dated March 12, 2007.

DRAFT (Aug 2011)

**Transferor: Irrigation or M&I - Not a Long Term Contractor  
(For Exchange Contractors, Use Exhibit A)**

**Transfer Purpose: M&I, CVP Contractor**

Is the Transferor an irrigation or M&I Contractor? If irrigation, proceed to the following steps below. If M&I, go to the section below where the Transferor is an M&I Contractor.

**Transferor is an Irrigation contractor (See Exhibit D, Example 5)**

1. Does the transferor have an M&I Rate?
  - A. Yes. Choose the higher of the transferor's irrigation or M&I contract rates. Compare this rate to the transferee's M&I contract rate and use the higher rate.
  - B. No. Choose the higher of the transferor's irrigation contract rate or temporary M&I rate (*Temporary water ratebook, schedule T-1*). Compare this rate to the transferee's M&I contract rate and use the higher rate.

Restoration

2. Apply current M&I mitigation and restoration charge.

Friant  
Surcharge?

3. Is the water being diverted from the Friant-Kern Canal, Madera Canal, or Millerton Reservoir?
  - A. No. Friant surcharge does not apply.
  - B. Yes. Friant surcharge applies.

Trinity  
PUD

4. Apply the Trinity Public Utility District Assessment on delivered water as identified in the letter to CVP water users dated March 12, 2007.

**Transferor is an M&I contractor**

1. Does the transferee have a calculated M&I Rate?
  - A. Yes. Use the higher of the transferor's or transferee's M&I rates.
  - B. No. Choose the higher of the transferor's M&I or temporary M&I contract rates (*Temporary water ratebook, schedule T-1*).

Restoration

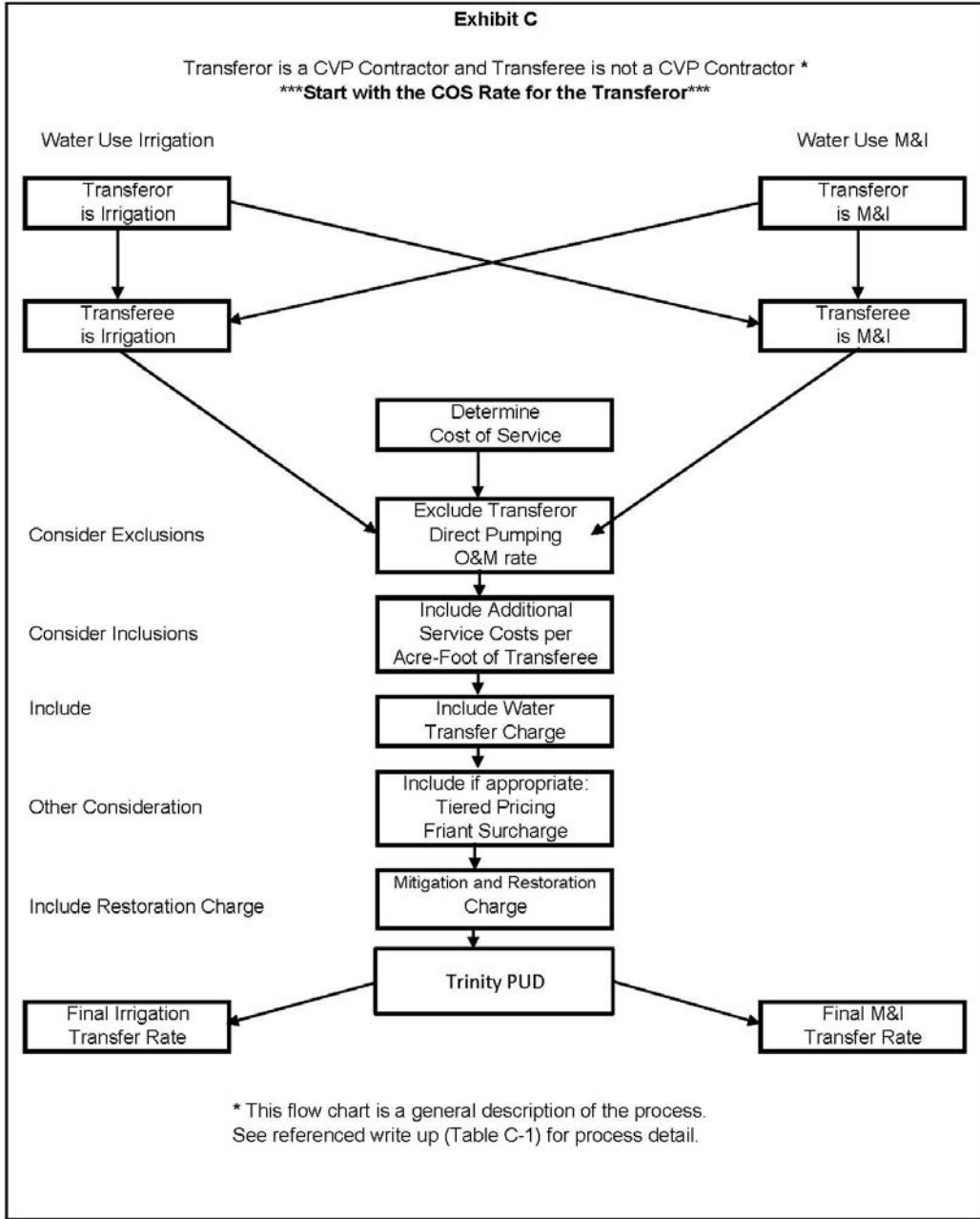
2. Apply current M&I mitigation and restoration charge.

Friant  
Surcharge?

3. Is the water being diverted from the Friant-Kern Canal, Madera Canal, or Millerton Reservoir?
  - A. No. Friant surcharge does not apply.
  - B. Yes. Friant surcharge applies.

Trinity  
PUD

4. Apply the Trinity Public Utility District Assessment on delivered water as identified in the letter to CVP water users dated March 12, 2007.



**Transferor:** Irrigation or M&I, CVP Contract  
**Transfer Purpose:** Irrigation or M&I, Not a CVP Contractor

**WORKSHEET DEVELOPMENT:**

Compile the proposed transfer rate using the transferor's irrigation Cost of Service rate if irrigation water is being transferred for an Irrigation purpose. Otherwise the transferor's M&I rate is used. If the transferor does not have an M&I rate, a temporary M&I rate would be used using the special water rates. If the transferor is a Friant Division Contractor who has entered into a Friant 9(d) contract, refer to Section 9.3 for further clarification of the rate development.

1. Does the transfer require use of additional CVP services?
  - A. No. Additional costs are not added.
  - B. Yes.
    - i. Identify the additional capital services to be used and the cost per acre-foot for each capital service.
    - ii. Identify the additional Irrigation O&M services to be used and the cost per acre-foot for each O&M service from the temporary water rates.<sup>6</sup>
  
2. Does the transfer require fewer CVP services?
  - A. No.
    - i. Do not deduct any components from the transferor's rate.
    - ii. Do not deduct San Luis Drain Kesterson cleanup costs.
    - iii. No adjustments are made for capital services as these are fixed costs.
  - B. Yes. Deduct appropriate O&M services. Supporting documentation is needed to document actual financial savings realized by the United States as a result of the transfer.
    - i. Deduct direct pumping O&M allocable costs per acre-foot component of the transferor as identified on schedule A-2A of the applicable irrigation or M&I water ratebook.

Additional  
Services?

Fewer  
Services?

**Note: Apply the water transfer charge.<sup>7</sup>**

<sup>6</sup> Energy use costs are to be in compliance with agreements set by the contracting officer.

<sup>7</sup> This charge is applicable for water transfers between CVP & non-CVP contractors as required by CVPIA. The amount collected under this authority is deposited into the Restoration Fund. The calculation is as follows:

A. For water used for irrigation purposes, the difference between the cost of service rate and the full cost rate per RRA 202(3) is the transfer charge.

B. For water used for M&I purposes, the difference between the cost of service rate and the M&I rate is the transfer charge. Rates may need to be calculated to determine the M&I rate if transferred from a CVP Irrigation contractor.

Tiered Water Rates?

- 3. Do tiered water rates apply to transferor’s water? Tiered water rates are not applicable for Sacramento River Settlement Contractors or Contractors who are not under renewal contracts.
  - A. No. Do not add tiered water rates.
  - B. Yes. The full cost rate above, inclusive of the transfer charge, meets or exceeds the pricing requirements for Tier pricing. As such, no additional incremental rate is to be determined for Tier Pricing.

Water on Full Cost Lands?

- 4. Is the transferred water being delivered to full cost lands?
  - A. No. Full cost interest rates do not apply.
  - B. Yes. In addition to the costs determined above, the transferee is required to pay additional interest on all capital associated with delivering water required to be paid at the 205(a)(3) rate. These costs apply and are to be paid by the transferee the month after delivery.
    - i. The calculation of RRA 205(a)(3) rates follow a similar process for determining the Full Cost rates above under the 202(3) rates. If the rate is higher than determined under 202(3), the difference between the two rates applies as additional interest cost.

Restoration

- 5. Apply current Irrigation or M&I mitigation and restoration charge based on the transfer purpose.

Friant Surcharge?

- 6. Is the water being diverted from the Friant-Kern Canal, Madera Canal or Millerton Reservoir?
  - A. No. Friant surcharge does not apply.
  - B. Yes. Friant surcharge applies.

Trinity PUD

- 7. Apply the Trinity Public Utility District Assessment on delivered water as identified in the letter to CVP water users dated March 12, 2007.

**EXHIBIT D \***

**EXAMPLES**

**EXAMPLES 1 - 4\*: TRANSFEROR HAS A RENEWED CONTRACT AND IS TRANSFERRING TO A CVP CONTRACTOR**

Examples 1: Transferor is an Irrigation CVP Contractor with a Renewed Contract, transferring water to an Irrigation CVP Contractor. One or Both the Transferor and Transferee do not have Ability-to-Pay Relief Status.

Example 2: Transferor is an Irrigation CVP Contractor with a Renewed Contract, transferring water to an Irrigation CVP Contractor. Both the Transferor and Transferee have Ability-to-Pay Relief Status.

Example 3: Transferor is an Irrigation CVP Contractor with a Renewed Contract, transferring water to an M&I CVP Contractor. Transferor does not have an M&I Water Rate.

Example 4: Transferor is an M&I CVP Contractor with a Renewed Contract, transferring water to an Irrigation CVP Contractor.

\* See Examples 6 and 7 for transfers of Exchange Water and transfers of Rescheduled Water from the Friant and San Luis Divisions.

**EXAMPLE 5: TRANSFEROR DOES NOT HAVE A RENEWED CONTRACT AND TRANSFEE IS A CVP CONTRACTOR**

Example 5: Transferor is an M&I CVP Contractor without a Renewed Contract, transferring water to an Irrigation CVP Contractor.

**EXAMPLE 6: TRANSFEROR IS AN EXCHANGE CONTRACTOR AND TRANSFEE IS A CVP CONTRACTOR**

Example 6: Transferor is an Exchange Contractor, transferring water to an Irrigation CVP Contractor.

**EXAMPLE 7: TRANSFEROR IS A SAN LUIS UNIT CONTRACTOR TRANSFERRING RESCHEDULED WATER AND TRANSFEE IS A CVP CONTRACTOR**

Examples 7: Transferor is an Irrigation CVP Contractor with a Renewed Contract, transferring rescheduled water to an Irrigation CVP Contractor.

**Example 1: Use the Business Practice Guidelines for Accounting for CVP Water Transfers, Exhibit A, Section 1**

Transferor: Irrigation, Renewed Contract      Water Contractor: DMC Water Contractor  
 Transfer Purpose: Irrigation                      Water Contractor: SLC Contractor with Direct Pumping

Rates

Identify the Transferor's Cost of Service Rate **24.64**

Step 1: Do both the transferor and transferee have ability to pay (ATPR) relief?

No. Do steps 2 through 8 of A-1.

Steps 2 and 3

Reduce Rate for Transferor's Direct Pumping O&M?

Add Additional Services to Transferee that Apply:

Storage Capital	
San Felipe Unit?	
All Others?	
Conveyance Pumping Capital?	
Corning PP	
Dos Amigos PP	<b>0.65</b>
O'Neill PGP	<b>0.40</b>
Tracy PP	
FK/Madera Exchange	
All Other Contractors	
Conveyance Capital?	
Direct Ppg Capital?	<b>1.43</b>
Storage O&M	
Direct Pumping O&M?	<b>2.54</b>

**Effective Transfer Rate 29.65**

Steps 4 through 8

4. Identify Transferor's Tiered Water Rates (Begin with the Transferor's Full Cost 202(3) Rate)  
 Full Cost==> **34.94** <==Full Cost

Tier 2: Applicable to > 81 <= 90% of transferor's entitlement      5.15

Tier 3: Applicable to > 90% of transferor's entitlement      10.30

5. Identify Applicable Full Cost (FC) Interest Water Rate for Transferee.

		Full Cost Water Rate	Additional Interest from		
			Eff. Rate	Tier 2	Tier 3
202(3) Interest Rate?	Total FC Rate==>	<b>56.24</b> <==Total FC Rate	<b>26.59</b>	<b>21.44</b>	<b>16.29</b>
205(a)(3) Interest Rate?	Total FC Rate==>	<b>71.24</b> <==Total FC Rate	<b>41.59</b>	<b>36.43</b>	<b>31.28</b>

6. Irrigation Restoration Fund Charge **8.24**

7. Is the Water being diverted from the Friant-Kern Canal or Millerton Reservoir?

If Yes, Friant Surcharge Applies.

8. Identify Trinity PUD Assessment **0.11**

Check Box after Verification of Above Rates in Ratebook

**Example 2: Use the Business Practice Guidelines for Accounting for CVP Water Transfers, Exhibit A, Section 1**

Transferor: Irrigation, Renewed Contract                      Water Contractor: TCC Water Contractor with Direct Pumping  
 Transfer Purpose: Irrigation                                      Water Contractor: TCC Water Contractor

		Rates
Identify the Transferor's Cost of Service Rate		<b>40.89</b>
Step 1: Do both the transferor and transferee have ability to pay (ATPR) relief?		
Yes. Do step 1B; input ATPR relief below; then do Steps 2 through 8 of A-1.		
<u>Steps 2 and 3</u>		
Reduce Rate for Transferor's Direct Pumping O&M?		<b>-4.12</b>
Add Additional Services to Transferee that Apply:		
Storage Capital		
San Felipe Unit?		
All Others?		
Conveyance Pumping Capital?		
Corning PP		
Dos Amigos PP		
O'Neill PGP		
Tracy PP		
FK/Madera Exchange		
All Other Contractors		
Conveyance Capital?		
Direct Ppg Capital?		
Ability to Pay Capital Relief (Cost to Power)		<b>(22.23)</b>
Storage O&M		
Direct Pumping O&M?		
<b>Effective Transfer Rate</b>		<b><u>14.54</u></b>
<u>Steps 4 through 8</u>		
4.	Identify Transferor's Tiered Water Rates (Begin with the Transferor's Full Cost 202(3) Rate)	
	Full Cost==>	<b>55.81</b> *
	Tier 2: Applicable to > 81 <= 90% of transferor's entitlement	18.58
	Tier 3: Applicable to > 90% of transferor's entitlement	37.15
5.	Identify Applicable Full Cost (FC) Interest Water Rate for Transferee.	
	Full Cost Water Rate	<u>Additional Interest from</u>
		Eff. Rate    Tier 2    Tier 3
	202(3) Interest Rate?    Total FC Rate==> <b>35.06</b> <==Total FC Rate	<b>20.52    1.95    -</b>
	205(a)(3) Interest Rate?    Total FC Rate==> <b>42.25</b> <==Total FC Rate	<b>27.71    9.13    -</b>
6.	Irrigation Restoration Fund Charge	<b>8.24</b>
	Ability to Pay Restoration Fund Charge Relief (Cost to Power)	<b>(8.24)</b>
	Applicable Restoration Fund Charge for Transfer Water	-
7.	Is the Water being diverted from the Friant-Kern Canal or Millerton Reservoir?	
	If Yes, Friant Surcharge Applies.	
8.	Identify Trinity PUD Assessment	<b>0.11</b>

**Check Box after Verification of Above Rates in Ratebook**   

\* Excludes Distribution System Interest Identified on Irrigation water ratebook, Schedule A-3A



**Example 3: Use the Business Practice Guidelines for Accounting for CVP Water Transfers, Exhibit A, Section 2**

Transferor: Irrigation, Renewed Contract      Water Contractor:      DMC Water Contractor  
 Transfer Purpose: M&I                              Water Contractor:      SLC Contractor with Direct Pumping

Do Steps 1 through 7 of A-2. Rates

Step 1: Transferor does not have an M&I Cost of Service Rate,  
 Use a Temporary Water Rate 25.44

Steps 2 and 3

What additional Services does the transfer require?

O'Neill PGP Capital (from Schedule TR-1)	0.84
Dos Amigos PP Capital (from Schedule TR-1)	1.38
Direct Pumping Capital (from Schedule TR-1)	5.76
Direct Pumping O&M (M&I Schedule A-2a)	2.31
Effective Transfer Rate	<b>35.73</b>

Steps 4 through 7

4.	Tiered Pricing Interest *	Full Cost	35.03	
	Tier 2: Applicable to > 81 <= 90% of transferor's entitlement			<b>4.80</b>
	Tier 3: Applicable to > 90% of transferor's entitlement			<b>9.59</b>
5.	M&I Restoration Fund Charge			<b>16.49</b>
6.	Is the Water being diverted from the Friant-Kern Canal or Millerton Reservoir?			
	If Yes, Friant Surcharge Applies.			
7.	Identify Trinity PUD Assessment			<b>0.11</b>

**Check Box after Verification of Above Rates in Ratebook**     

\* Used Irrigation Full Cost Rate as the M&I Full Cost Rates were not available for this example.

**Example 4: Use the Business Practice Guidelines for Accounting for CVP Water Transfers, Exhibit A, Section 4**

Transferor: M&I, Renewed Contract      Water Contractor:      DMC Water Contractor  
 Transfer Purpose: Irrigation              Water Contractor:      SLC Contractor with Direct Pumping

Do Steps 1 through 8 of A-4. Rates  
 Step 1: Use the Transferor's M&I Cost of Service Water Rate 19.11

Steps 2 and 3

What additional Services does the transfer require?

O'Neill PGP Capital (from Schedule TR-1)	0.40
Dos Amigos PP Capital (from Schedule TR-1)	0.65
Direct Pumping Capital (from Schedule TR-1)	1.43
Direct Pumping O&M (M&I Schedule A-2a)	2.54
Effective Transfer Rate	<u><u>24.13</u></u>

Steps 4 through 8

4.	Tiered Pricing Interest (M&I, Schedule FC-1)	Full Cost	34.94
	Tier 2: Applicable to > 81 <= 90% of transferor's entitlement		<b>7.92</b>
	Tier 3: Applicable to > 90% of transferor's entitlement		<b>15.83</b>
5.	Identify Applicable Full Cost (FC) Interest Water Rate for Transferee.		
		Full Cost Water Rate	<u>Additional Interest from</u> Eff. Rate    Tier 2    Tier 3
	202(3) Interest Rate?    Total FC Rate==>	<b>56.24</b> <==Total FC Rate	<b>32.11    24.19    16.28</b>
	205(a)(3) Interest Rate?    Total FC Rate==>	<b>71.24</b> <==Total FC Rate	<b>47.11    39.19    31.28</b>
6.	Irrigation Restoration Fund Charge		<b>8.24</b>
7.	Is the Water being diverted from the Friant-Kern Canal or Millerton Reservoir?		
	If Yes, Friant Surcharge Applies.		
8.	Identify Trinity PUD Assessment		<b>0.11</b>

**Check Box after Verification of Above Rates in Ratebook**

**Example 5: Use the Business Practice Guidelines for Accounting for CVP Water Transfers, Exhibit B, Section 1**

Transferor: M&I, Not a Renewed Contract	Water Contractor:	SLC Contractor
Transferee: Irrigation	Water Contractor:	Sacramento River Settlement Contractor

Contract Rates:	SLC Contractor	23.47	Rates
	Sacramento River Settlement Contractor	21.56	

Step 1: Use the higher of the Contract Rates **23.47**

If the Water is put on Full Cost Lands, Transferee is subject to transferee's full cost incremental rate

Transferee's Full Cost  
Water Rate

28.64

Steps 2 through 5

- |    |                            |             |
|----|----------------------------|-------------|
| 2. | Incremental Full Cost Rate | <b>5.17</b> |
| 3. | Restoration Fund Charge    | <b>8.24</b> |
| 4. | Friant Surcharge           | <b>N/A</b>  |
| 5. | Trinity PUD Assessment     | <b>0.11</b> |

**Check Box after Verification of Above Rates in Ratebook**

**Example 6: Use the Business Practice Guidelines for Accounting for CVP Water Transfers, Exhibit A, Section 1**

Transferor: Exchange Contractor      Water Contractor: San Joaquin River Exchange CWA  
 Transfer Purpose: Irrigation      Water Contractor: SLC Contractor with Direct Pumping

	Rate	<u>Full Cost **</u>	
Identify the Transferor's Cost of Service Rate	-		
Step 1: Do both the transferor and transferee have ability to pay (ATPR) relief?			
No. Do steps 2 through 8 of A-1.			
<u>Steps 2 and 3</u>			
Reduce Rate for Transferor's Direct Pumping O&M?			
Add Additional Services to Transferee that Apply:			
Storage Capital			
San Felipe Unit?			
All Others?			
Conveyance Pumping Capital?			
Corning PP			
Dos Amigos PP	0.65	1.50	1.87
O'Neill PGP	0.40	0.92	1.15
Tracy PP			
FK/Madera Exchange			
All Other Contractors			
Conveyance Capital?	2.96	6.82	8.54
Direct Ppg Capital?	1.44	3.32	4.15
Ability to Pay Capital Relief (Cost to Power)			
Storage O&M			
Direct Pumping O&M?	2.21	2.21	2.21
<b>Effective Transfer Rate</b>	<b>7.66</b>	<b>14.77</b>	<b>17.93</b>

Steps 4 through 8

4. Identify Transferor's Tiered Water Rates (Begin with the Transferor's Full Cost 202(3) Rate)				
		Full Cost==>	N/A *	
	Tier 2: Applicable to > 81 <= 90% of transferor's entitlement			
	Tier 3: Applicable to > 90% of transferor's entitlement			
5. Identify Applicable Full Cost (FC) Interest Water Rate for Transferee.				
		Full Cost Water Rate	<u>Additional Interest from</u>	
			Eff. Rate	Tier 2
			Tier 3	
	202(3) Interest Rate? Total FC Rate==>	14.77 <==Total FC Rate	7.11	N/A
			N/A	N/A
	205(a)(3) Interest Rate? Total FC Rate==>	17.93 <==Total FC Rate	10.27	N/A
			N/A	N/A
6. Irrigation Restoration Fund Charge			N/A	
Ability to Pay Restoration Fund Charge Relief (Cost to Power)			-	
Applicable Restoration Fund Charge for Transfer Water			N/A	
7. Is the Water being diverted from the Friant-Kern Canal or Millerton Reservoir?				
	If Yes, Friant Surcharge Applies.			
8. Identify Trinity PUD Assessment			N/A	

Check Box after Verification of Above Rates in Ratebook

\* Excludes Distribution System Interest Identified on Irrigation water ratebook, Schedule A-3A  
 \*\* Capital rates are based on ratios derived from Warren Act, Full Cost Calculations, schedule W-1.

**Example 7: Use the Business Practice Guidelines for Accounting for CVP Water Transfers, Exhibit A, Section 1**

**\*\*\*Example of 2006 Water Rescheduled to 2007 Water Year - Use 2006 Water Rates\*\*\***

Transferor: Irrigation, Renewed Contract      Water Contractor:      DMC Contractor  
 Transfer Purpose: Irrigation                      Water Contractor:      SLC Contractor with Direct Pumping

Rates

Identify the Transferor's Cost of Service Rate **24.64**

Step 1: Do both the transferor and transferee have ability to pay (ATPR) relief?

No. Do steps 2 through 8 of A-1.

Steps 2 and 3

Reduce Rate for Transferor's Direct Pumping O&M?

Add Additional Services to Transferee that Apply:

Storage Capital	0.65
San Felipe Unit?	
All Others?	
Conveyance Pumping Capital?	0.40
Corning PP	
Dos Amigos PP	
O'Neill PGP	
Tracy PP	
FK/Madera Exchange	
All Other Contractors	
Conveyance Capital?	1.43
Direct Ppg Capital?	
Storage O&M	
Direct Pumping O&M?	<b>2.54</b>

**Effective Transfer Rate** **29.65**

Steps 4 through 8

4. Identify Transferor's Tiered Water Rates (Begin with the Transferor's Full Cost 202(3) Rate)

Full Cost==>	<b>34.94</b>	<==Full Cost
--------------	--------------	--------------

Tier 2: Applicable to > 81 <= 90% of transferor's entitlement 5.15

Tier 3: Applicable to > 90% of transferor's entitlement 10.30

5. Identify Applicable Full Cost (FC) Interest Water Rate for Transferee.

	Full Cost Water Rate	<==Total FC Rate	Additional Interest from		
			Eff. Rate	Tier 2	Tier 3
202(3) Interest Rate? Total FC Rate==>	<b>56.24</b>	<==Total FC Rate	<b>26.59</b>	<b>21.44</b>	<b>16.29</b>
205(a)(3) Interest Rate? Total FC Rate==>	<b>71.24</b>	<==Total FC Rate	<b>41.59</b>	<b>36.43</b>	<b>31.28</b>

6. Irrigation Restoration Fund Charge \* **8.24**

7. Is the Water being diverted from the Friant-Kern Canal or Millerton Reservoir?

If Yes, Friant Surcharge Applies.

8. Identify Trinity PUD Assessment \* **0.11**

**Check Box after Verification of Above Rates in Ratebook**

\* Charge and assesment based on the month of delivery.

Central Valley Project  
Transfer Form

Transferor, Renewed Contract

**Use the Business Practice Guidelines for Accounting for CVP Water Transfers, Exhibits A and C.**

Transferor: \_\_\_\_\_ Water Contractor: \_\_\_\_\_  
 Transfer Purpose: \_\_\_\_\_ Water Contractor: \_\_\_\_\_

	Rates
Identify the Transferor's Cost of Service Rate	_____
Reduce Rate for Transferor's Direct Pumping O&M	_____
Add Additional Services to Transferee that Apply	
Storage Capital	
San Felipe Unit	_____
All Others	_____
Conveyance Pumping Capital	
Corning PP	_____
Dos Amigos PP	_____
O'Neill PGP	_____
Tracy PP	_____
FK/Madera Exchange	_____
All Other Contractors	_____
Conveyance Capital	_____
Direct Ppg Capital	_____
Ability to Pay Capital Relief (Cost to Power)	_____
Storage O&M	_____
Direct Pumping O&M	_____

**Effective Transfer Rate**

Identify Transferor's Tiered Water Rates (Begin with the Transferor's Full Cost 202(3) Rate)	
	Full Cost==> _____ *
Tier 2: Applicable to > 81 <= 90% of transferor's entitlement	_____
Tier 3: Applicable to > 90% of transferor's entitlement	_____

Identify Applicable Full Cost (FC) Interest Water Rate for Transferee.

	Full Cost Water Rate	Additional Interest from
		Eff. Rate    Tier 2    Tier 3
202(3) Interest Rate?      Total FC Rate==> _____ <==Total FC Rate		_____
205(a)(3) Interest Rate?    Total FC Rate==> _____ <==Total FC Rate		_____

Irrigation Restoration Fund Charge	
Restoration Fund Charge	_____
Ability to Pay Restoration Fund Charge Relief (Cost to Power)	_____
Applicable Restoration Fund Charge for Transfer Water	_____
Friant Surcharge: Water being diverted from the Friant-Kern Canal or Millerton Reservoir	_____
Trinity PUD Assessment	_____

**Check Box after Verification of Above Rates in Ratebook**

\* If Applicable, Distribution System interest identified on Irrigation water ratebook, Schedule A-3A is excluded.

Central Valley Project  
Transfer Form

Transferor, Not a Renewed Contract  
Transferee, CVP Contractor

Use the Business Practice Guidelines for Accounting for CVP Water Transfers, Exhibits B

Transferor: \_\_\_\_\_

Water Contractor: \_\_\_\_\_

Transfer Purpose: \_\_\_\_\_

Water Contractor: \_\_\_\_\_

Contract Rates:    Transferor  
                                 Transferee

Irrigation  
\_\_\_\_\_  
\_\_\_\_\_

M&I  
\_\_\_\_\_  
\_\_\_\_\_

Rates

Use the higher of the Contract Rates

=====

If the Water is put on Full Cost Lands, Transferee is subject to transferee's full cost incremental rate

Transferee's Full Cost  
Water Rate

\_\_\_\_\_

Incremental Full Cost Rate

=====

Restoration Fund Charge

=====

Friant Surcharge

=====

Trinity PUD Assessment

=====

**Check Box after Verification of Above Rates in Ratebook**